

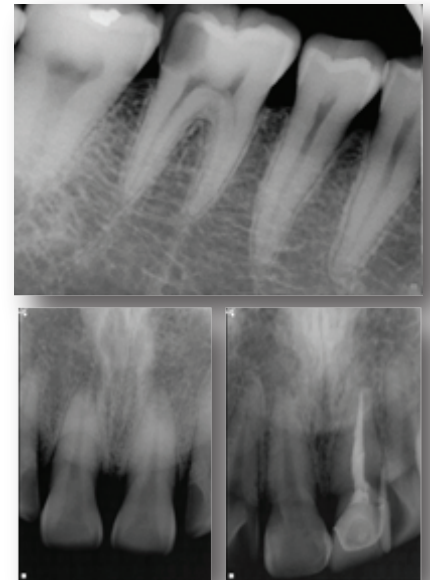
BEMEMS

THE BEST MEDICAL ITEMS

Portable Dental X-Ray System

RAYOS BPD-I

Best Quality, Best Design-The best dentist partner



- *Wide and high resolution LCD
- *Easy Graphic Operation and Ergonomic Design
- *Low patient dosage and excellent image quality

RAYOS BPD-I

Portable Dental X-Ray System

Features



- *For both Standard and Portable type
- *Easy Graphic Operation and Ergonomic Design
- *Large capacity battery
- *Low patient dosage and excellent image quality
- *Wide exposure ranges (0.01~2.00 sec.)
- *Correspond with chemical film and digital sensor
- *Wide and high resolution LCD

Specifications

X-Ray Generator	DC High Frequency	BPD-I
X-Ray Installation	Tube voltage	60 kV
	Tube current	2 mA
X-Ray Tube	Anode type	Stationary
	Anode angle	20°
	Focal spot size	0.8mm
	Heat capacity	8.5KHU
Exposure time	0.01~2.00 sec.	
Total Filtration	1.8 mm Al	
SSD	100 mm, 200 mm(Long cone: Option)	
Total Weight	2.3 Kg	
Dimension	174.42(W) X 143.50(H) X 150.70(D) mm	
Power requirement	Rechargeable Battery	
	22.2 VDC	



S.D.TANTAVADE (1988) CO.,LTD.

47 ซอยลาดพร้าว 20 ถนนลาดพร้าว

อำเภอเมือง จังหวัดนนทบุรี 11000

Tel:66(0)2952-4815-18 Fax:66(0)2952-4819

304 ชั้น 2 อาคาร 1 ถนนพหลโยธิน แขวงจตุจักร

เขตจตุจักร กรุงเทพมหานคร 10400

Tel:66(2)219-3050 www.facebook.com/SdTantavade1988Ltd