

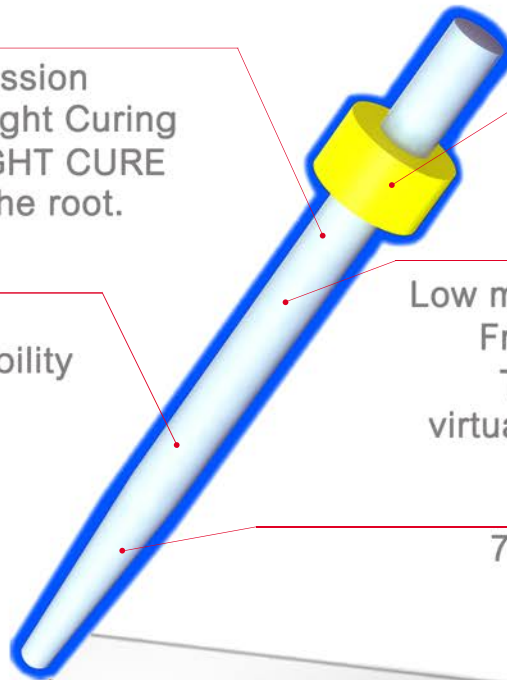
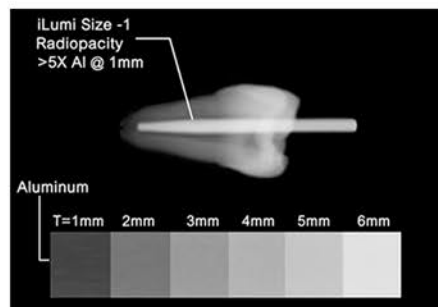
MOST LIGHT TRANSMISSION FIBER OPTIC POSTS

Optical Effect

True fiber optic light transmission distributes maximum Blue Light Curing Energy, capable of using LIGHT CURE cementation deep down to the root.

Radiopacity

5X aluminum @ 1mm provides detailed X-Ray visibility



Color Coded Stopper
Indicates diameter & demarcation

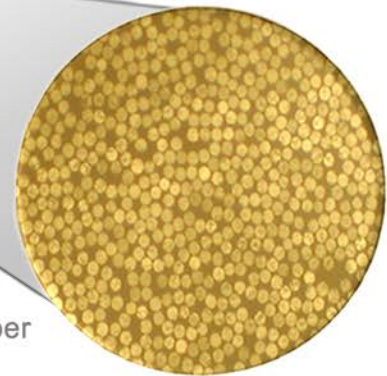
Mechanical Properties

Low modulus of elasticity: 17GPa
Fracture strength: >1200MPa
Tensile strength: >1600MPa
virtually eliminating root fracture

Composition

70% Reinforced optical fiber
30% Epoxy resin matrix
100% Biocompatibility

Ø 15 µm Optical Fiber



Product Comparison

Remaining cured cement

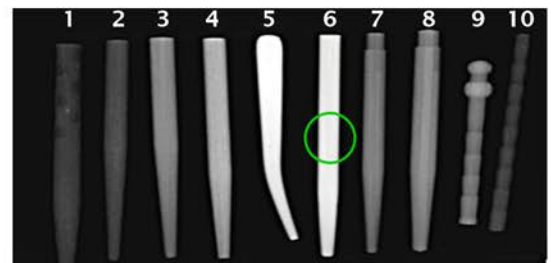


D.T. Light Post



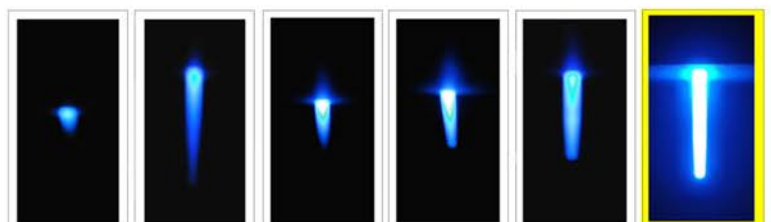
iLumi
Thoroughly polymerized
in apical area

Radiopacity



①Cytec ②3M Rely ③3M Rely X25 ④Vivadent ⑤Gutta-Percha
⑥iLumi ⑦DENTSPLY-R ⑧DENTSPLY-B ⑨Pentron ⑩Pentron

Superior Light Transmission



Hahnen
Cytec

Vivadent

3M Rely
X25

3M Rely
Xnew

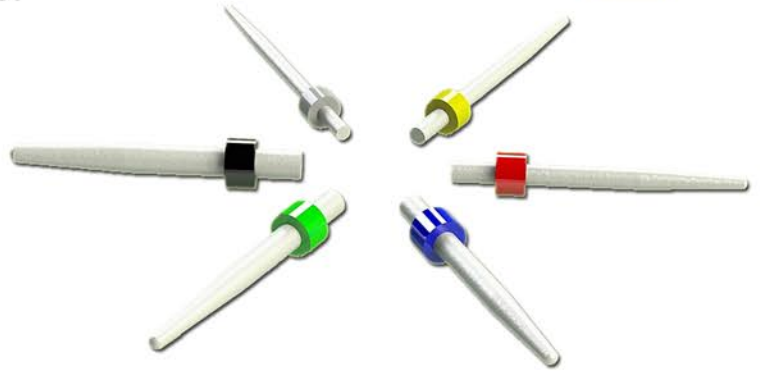
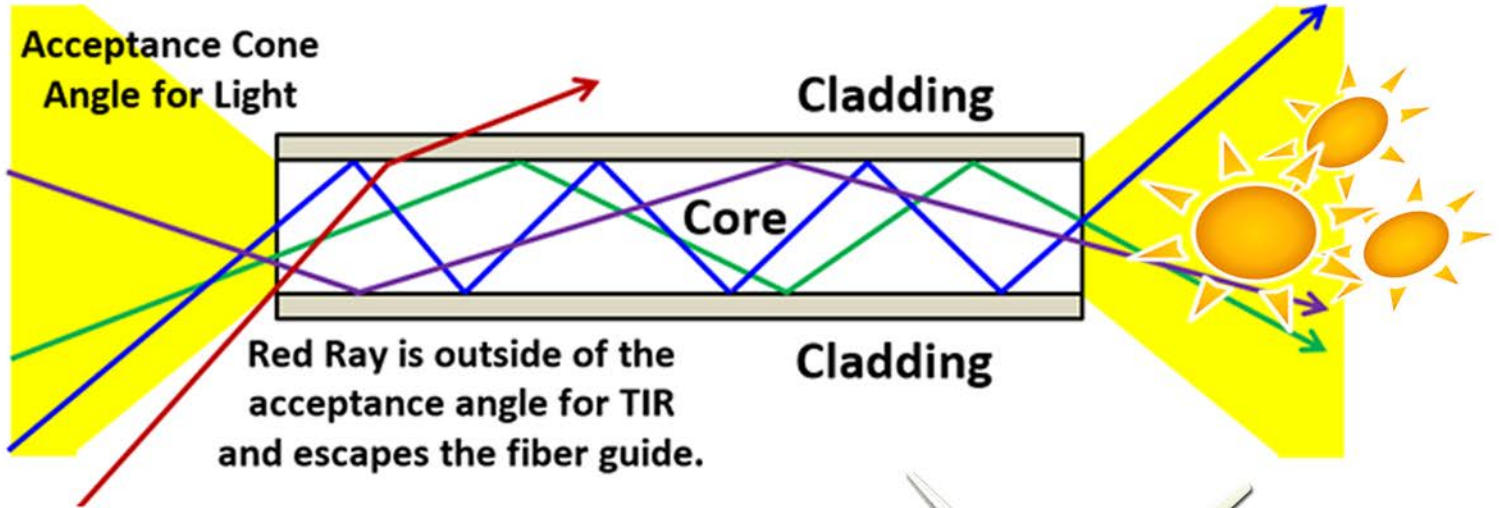
DENTSPLY
Xpost

iLumi®
Fiber Optic
Dental Post




Total Internal Reflection Light Transmission



Optical Cladding Glass forces all light rays in the acceptance angle to be totally internally reflected (TIR) and transmitted to the end.



Size Selection

Assortment Kit			Refills			Drills		
								
<i>UK-8000 includes:</i>			<i>UR-8010</i>	Ø1.10	10 posts	<i>DR-8011</i>	Ø1.10	3 pcs
Post	Ø1.35	5 posts	<i>UR-8001</i>	Ø1.35	10 posts	<i>DR-8007</i>	Ø1.35	3 pcs
Post	Ø1.47	5 posts	<i>UR-8002</i>	Ø1.47	10 posts	<i>DR-8008</i>	Ø1.47	3 pcs
Post	Ø1.67	5 posts	<i>UR-8003</i>	Ø1.67	10 posts	<i>DR-8009</i>	Ø1.67	3 pcs
Drill	Ø1.35	1 pc	<i>UR-8004</i>	Ø1.83	10 posts			
Drill	Ø1.47	1 pc	<i>UR-8005</i>	Ø2.04	10 posts			
Drill	Ø1.67	1 pc	<i>UR-8006</i>	Ø2.22	10 posts			

*Internal data of iLumi Sciences, inc.



S.D.TANTAVADE (1988) CO., LTD
 Head Office: +66(2)952-4815-18
 E-mail: info@sdt1988.com

Showroom: +66(2)219-3050
 Website: www.sdt1988.com

Facebook: SdTantavade1988CoLtd