

# Bioceramic Root Repair

## RetroMTA®



RetroMTA\_Synthesis and hydration behavior of calcium zirconium aluminate ( $\text{Ca}_7\text{ZrAl}_6\text{O}_{18}$ ) cement

Eun-Hee Kang a, Jun-Sang Yoo b, Bo-Hye Kim a, Sung-Woo Choi a, Seong-Hyeon Hong a,\*

a Department of Materials Science and Engineering, Research Institute of Advanced Materials, Seoul National University, Seoul 151-744, South Korea

b Department of Oral & Maxillofacial Surgery, School of Dentistry, Seoul National University, Seoul 110-749, South Korea

### Perforation Repair

**Bactericidal** pH 12.5, Calcium hydroxide effect

**Sealability** Bacterial entombment and fossilization

**Biocompatibility** New cementum formation

**Fast setting** 3-min, No-washout & 1-visit treatment

**No discoloration** Base for esthetics



#### Package

0.6g Intro Pack 0.3g x 2caps

2.4g Refill Pack 0.3g x 8caps



## BioMTA

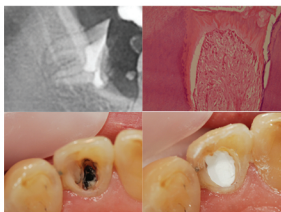
Seoul National University, Research Park Main Center #323

Gwanak ro1, Gwanak-gu Seoul 151-919, Korea

TEL 02-779-2880/2881 FAX 02-454-2885 <http://www.biomta.com>

## Make Teeth Alive





# Make Teeth Alive RetroMTA FAQ

## Indications?

For pulp capping, external resorption, coronal perforation, retrograde filling after apicoectomy, apexification and other root repair treatments that needs fast-setting MTA material.

## Differences with other MTAs?

RetroMTA is made of Calcium Silicate Bioceramic material not Portland Cement.  
Mainly for root repair that doesn't discolor the tooth and sets in 3 minutes.

## Setting time and compressive strength?

Initial setting time is 3 minutes. Do not pack repeatedly after placement of material with instruments because it will interfere the setting reaction.

Final setting time is 4 hours. Compressive strength after final set is about 100 MPa.

## Treatment and prevention of discoloration?

Treatment : Removal of discolored area and place RetroMTA.

Prevention : Placement of RetroMTA as base material.

## Prevention from being washed-out (Solution to faster setting of MTA)?

Too watery : Gently press with dry cotton pellet for 120 seconds.

Too powdery : Gently press with wet cotton pellet for 120 seconds.

Irrigation with NaOCl will wash out remaining particles. Do not use EDTA because it interferes with setting action.

## When is it used as base?

Pin point exposure of pulp on deeply prepared cavity. Place 2-3mm thickness of RetroMTA base and then resin.

## Used for root canal filling material?

Can be used in anterior teeth where esthetics is important.

## When used in open apices?

When apices are large, place a collagen sponge and then fill with RetroMTA to prevent excessive overfilling.

## Pulpotomy?

May be used for both primary and permanent teeth.

For permanent teeth 1) (-) Hot/cold test 2) (-) Percussion 3) (-) Palpation are candidates for pulpotomy.

## Method used for safe extraction of 3rd molar?

Do coronectomy above CEJ and then place RetroMTA on the orifices of the root. After 3 months, extraction can be performed after confirming that the roots are separated with IAN.

Contact Information  
Head Office : +66(2)952-4815-18  
Training center : +66(2)219-3050  
E-mail : info@sdt1988.com  
Website : www.sdt1988.com

Facebook : www.facebook.com/SdTanavade1988CoLtd

